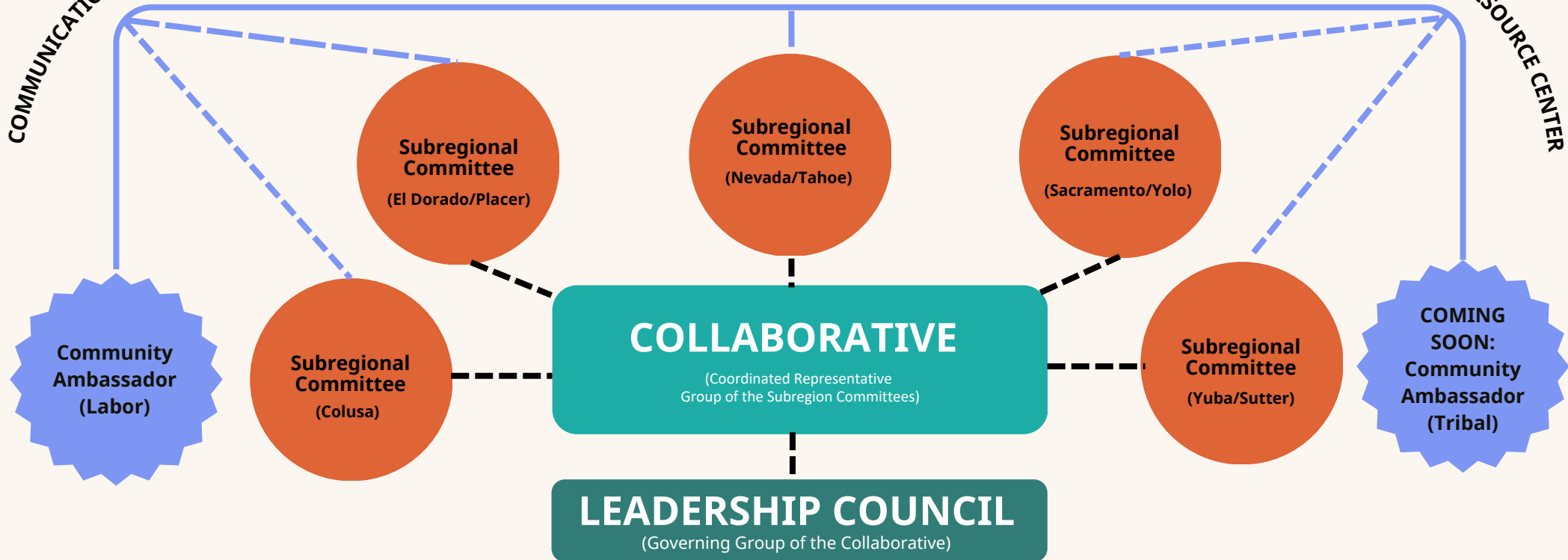


## CA Jobs First Structure

COMMUNICATIONS EXCHANGE NETWORK

TRAINING, RESEARCH & RESOURCE CENTER



## VALLEY VISION

(Regional Convener, Fiscal Agent, and Backbone Support to Overall Structural Components)

**SHARED VISION**  
 To develop an equity-based low-carbon economic plan through an inclusive, transparent, co-owned, and subregional data-informed planning process in the Capital region. The plan will produce strategies to generate high-quality jobs, clear pathways into new jobs for historically left out populations, and a sustainable and equitable economy in the eight-county region.

**SHARED VALUES**  
**OUR PROCESS IS INCLUSIVE WHEN** we actively involve divergent voices and those often least engaged in the subregions of the Capital Region through accessible opportunities in the decision-making process with influence that valued, appreciated, and encouraged.  
**OUR OUTCOMES ARE EQUITABLE WHEN** our plans, shown through data, creates economic prosperity in historically disinvested communities and populations throughout the Capital Region.

Note: An ad hoc committee may be established as necessary by any group within the Capital Region operating structure for a clearly defined purpose, task, and objective with a determined timeframe.